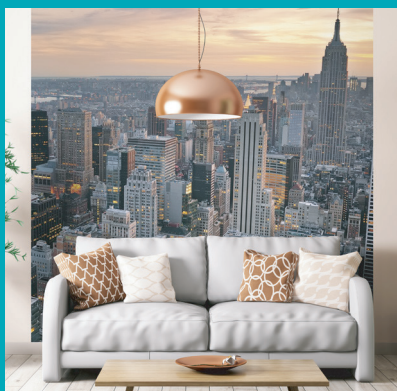
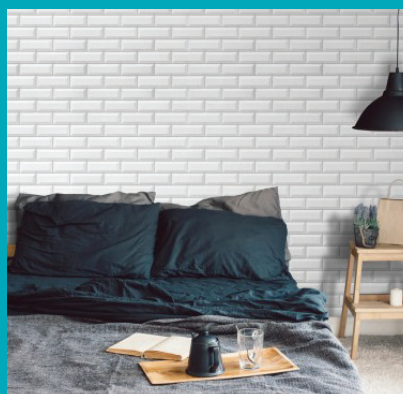


Grosfillex®

# The Modern Alternative to Tiles



[jgkellygroup.com](http://jgkellygroup.com)

# welcome...



## introduction

GROSFILLEX is a family run business located in Arbent, France, a small village in the Jura foothills. Originally the company made wooden products but in 1954, Raymond Grosfillex changed the direction of the company towards more sophisticated lifestyle orientated products such as garden furniture, planters, folding doors and wall panels. A new era in plastic product production was born.

At present Grosfillex employ a workforce of 1200, in three production sites located across the world. The main production is in France, factories are also based in North America and Russia. Over the last half a century Grosfillex has built up a worldwide recognised brand and has contributed to the large scale of Grosfillex's international presence. Fifty per cent of Grosfillex's production is sold overseas and it is represented in 100 countries across the world. Grosfillex now produce products for improving the home environment with practical, comfortable, long lasting and extremely robust properties.

In Ireland, Grosfillex wall panels are distributed by J G Kelly Supplies and for the last 30 years a strong business relationship has been formed between the companies. Like Grosfillex, J G Kelly Supplies is a family business founded by Gerard Kelly in July 1989 with the modest transport of a Volkswagen pickup and benevolent help of a friend, who offered the loan of storage facilities.

Today, J G Kelly employs 30 people and have stores located in Monaghan, Dublin and Limerick. The core of today's business is upvc products such as fascia and soffit systems, aluminium rainwater systems, aluminium fascia and soffits, channel drainage products, concrete screeds, coving products and, of course, a large portion being Grosfillex wall panels.

It was in 1991 that J G Kelly Supplies went into partnership with Grosfillex and over this time the Grosfillex brand has went from strength to strength and is now recognised as the market leader. With a vibrant range of colours, high quality materials and the best possible customer service on offer, Grosfillex can be sourced in stockists all over the thirty two counties of Ireland and Northern Ireland.

**For more information on your local stockist, please click on our website: [jgkellygroup.com](http://jgkellygroup.com)**





GROSFILLEX wall panels are a complete waterproof panelling system for bathroom and shower areas as an alternative to tiles. With bright attractive colours finished with a high gloss, Grosfillex can transform any dated and tired bathroom quickly and easily. Installation is made simple with a range of trims and maintenance is nearly non existence. Grosfillex offer a cost effective way to update any bathroom or shower without the need for a tradesperson.

Grosfillex panels are the market leader, listed below are the advantages to the panels. Consider these and stop being a slave to your bathroom tiles.

- Attractive colours to suit all tastes
- Trims available to help ensure fitting is quick and easy
- Can be installed straight over tiles to transform tired and dated bathrooms
- Transformation is made with little mess and disruption
- Has an exclusive V joint system for ease of fitting
- A glossy finish ensures cleaning is simple
- Highly resistant to condensation
- Panels are damp, heat and shock resistant
- Insulation of the bathroom can be increased with the panels
- Manufactured in France to full European Standards
- One of the only panels with Class M1 fire certificate



Lightweight



Easy to Transport



Water Resistant



Moisture Resistant



Easy to Clean



M1 Fire Rating



Grosfillex Attitude Brilliant White Ceiling

ceilings



Not only do ATTITUDE GROSFILLEX panels work on the walls but as an add-on to your bathroom try installing the Brilliant White 15" or the Roomliner White / Chrome. These panels creates a ceiling which can be wiped clean in seconds. It also is a solution to the problem of peeling paint due to condensation, installing panels will completely eliminate this problem.

### Specification of Ceiling Panels

#### Attitude Brilliant White

375mm wide x 2600 length x 8mm thick

#### Roomliner White

250mm wide x 4000/2700mm length x 8mm thick

#### Roomliner Chrome

200mm wide x 4000/2700mm length x 8mm thick

Roomliner panels come in both 2.7m and 4m lengths. The 4m length is specifically manufactured in a longer length for installations which require longer lengths or for people who do not require or want a staggered effect.

The Roomliner board also caters for the customer who wants a chrome effect on the ceiling. The board itself is white and it has a chrome strip built into the side of the panel. This panel will certainly give any bathroom a modern touch.

### Installing a Grosfillex ceiling

Attitude Brilliant White is the only board in the Grosfillex range which can be joined end to end so the user is not restricted to a 2.6 metre length. The Brilliant White comes with a white joiner piece built into the side of the panel and a length of the joiner comes spare in the pack. This is enough to cover the 3 lengths in a pack. The end of this board has an indent in the panel which this joiner slides into. The process of fitting this panel is the same as fitting a wooden floor the panels click into each other top and bottom and both sides.

You can screw or staple both panels straight onto the plasterboard. Stapling or screwing in the lip so that the next board will come along and hide the screw or staple. If you are putting up Grosfillex walls and ceiling, it is easiest to put up the ceiling first with no trims around the edge, then push the endcap for the top of the walls up tight to the ceiling panel, that way you will see no edges.

Please see opposite page for how the Attitude Brilliant White Ceiling should look.





NEW

mineral effect

## Element 3D Range

Mineral Effect  
for a Modern Interior



Grosfillex Wall Panelling in Element 3D Marble Tile Effect



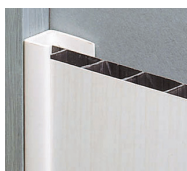


To make installation for the user as simple as possible, GROSFILLEX have created two part trims which are all 2.6 metres in length and 8mm thick. Please see below and the fitting guide on how to use the trims.

### Trims for Marble, Tile Effect & Ceiling

These trims are only available in white.

#### ENDCAP SECTION



The most commonly used trim in the installation process. It can be used along the top up to the ceiling and on the bottom but only down to floor tiles and around windows and doors.

#### MULTIFUNCTION



The Multifunction trim is only used as an internal corner

#### EXTERNAL CORNER



Only used in a full bathroom installation and not in a shower area. It can also be used around windows to panel in towards the glass.

### Trims for ELEMENT Ceramic and Dune Tile Range

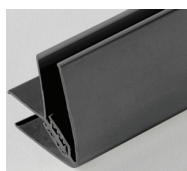
Please see the colour chart on page 15 for all the trim colours to match the element boards.

#### ENDCAP SECTION



The most commonly used trim in the installation process. It can be used along the top up to the ceiling and on the bottom but only down to floor tiles and around windows and doors.

#### INTERNAL/EXTERNAL



This trim is universal; it can be used in both an internal and external corners by just turning it over. Again the external corner can be used around windows to panel in towards the glass

With regards to the 4m board in the Roomliner range, the user can either use the normal 2.6m endcap or there is a wider trim available in 6m lengths.

## Accessories

As well as the Grosfillex trims, we also supply accessories to compliment the panels during and after installation.

#### PVC Skirting Boards

These are 5 metre length of PVC skirting.

There are two different types available:

- 95mm ogee swish skirting board, this has an ogee mould on top of the skirting board which can add some detail to the bathroom
- 120mm Taurus skirting board, this is a moulded skirting board



Both skirting boards are only available in white. The skirting is stuck over the bottom of the panels using silicone. If the user is

going to install the skirting board they do not need to use Endcap section on the bottom down to the tiles, you can just leave the edge of the boards and the skirting will cover this. This skirting is perfect to complete a bathroom renovation because like the panels it is extremely easy to keep clean.

#### Sealux bath trim

This is a very important trim when installing Grosfillex. If this is not installed then a complete waterproof seal cannot be achieved.

This particular trim is installed around the shower tray or bath. users CANNOT use the Endcap section around the shower tray

when using a bath trim. J G Kelly Supplies recommend this trim for use with the Grosfillex panels as it is the best one on the market.





Bathroom with Grosfillex Wall Panelling in  
Element Premium Concrete Tile Effect finish

fitting Grosfillex







## IMPORTANT POINTS WHEN FITTING

1. THERE MAY BE A SLIGHT VARIATION IN COLOUR DIFFERENCE BETWEEN BATCHES OF THE PANELS. PLEASE ENSURE THE FITTER IS HAPPY WITH THE COLOUR BEFORE THE PANELS ARE STUCK ONTO THE WALL.
2. DO NOT APPLY THE TRIMS OR PANELS WITH GRIPFILL OR CONSTRUCTION SILICONE AS THEY HAVE LITTLE FLEXIBILITY. IF THERE IS ANY MOVEMENT IN THE WALL THE ADHESIVE WILL PULL THE BOARD AND WARP IT.
3. ONLY USE A BATH SEAL AROUND A SHOWER OR BATH - NEVER USE AN END CAP HERE.
4. WHEN FITTING GROSFILLEX IN ANY SITUATION PLEASE ENSURE THAT ALL TRIMS ARE FIXED SECURELY, THIS WILL GUARANTEE THE GROSFILLEX TO BE WATERPROOF AND IMPERISHABLE.

Listed below are the trims which accompany the Grosfillex panels to help the user fit the panels correctly

### Attitude Brilliant White/Marble/ Tile Effect white trims:

- Multifunction – internal corners
- External corner – used for external corners in a bathroom or around windows to panels in towards the glass
- Endcap section – Around the ceiling and down toward the floor tiles, around the windows and doors.

### Element Range colour matching trims:

- Endcap – Around the ceiling and down toward the floor tiles, around the windows and doors.
- Internal/External corner – Around the ceiling and down toward the floor tiles, around the windows and doors.

### Direct panelling: for dry walls

The first thing that the fitter does is to attach all the trims all around the room. All the Multifunction, External and Endcap trims so that you create a frame for the panels. The customer must also fit the bath trim at this stage. This trim is extremely important.

Trims can either be stapled or screwed and siliconed to the block. Silicone will need to set overnight before the panels are inserted. We recommend a low modulus, high flexibility silicone.

Once you have the trims up, you can then start to put up the Grosfillex panels. We recommend starting in an internal corner or around a door, working left to right around the perimeter of the room, finishing where you started.

With the first panel into the trim on the left hand side, you have to cut the little lip of the panel, so that the panel sits squarely into the trim. The next panel then slots into the first board. Grosfillex is a self sealing panel; therefore you do not need to silicone between the boards. This is not advised as there is a channel for taking away water at the back of the panels and silicone will clog this.

When doing a square bathroom with 4 internal corners, you will have to cut the lip of 4 boards. It is then just a matter of putting the panels into one another.

One tube of silicone is used for 3 x 10" panels and 2 x 15" panels. Also then put in a few extra tubes for putting up the trims. Silicone is only applied to the back of the panels; put a full bead the whole way around the edge and then zig zag a bead between this rectangle. You must stick as much of the board to the wall as is possible.

Once you have all the board stuck up and are back where you started, clip on the fronts of the trims and your room is complete.

Please note that if you wish to use on a skirting board, do not put the endcap on the bottom. Run the panels down to the floor tiles and then silicone the skirting board over the panels.

Another little tip to make the Grosfillex look good in the bathroom is to put the factory cut of the panels down on top of the bath trim, this way it will be a nice even finish and if you have needed to cut the panels you can hide this in the top under the Endcap section.

Grosfillex can be fitted over tiles in exactly the same way as above, there is just a little bit more preparation involved. Firstly you must ensure that none of the tiles are falling off to being damp. Then the tiles must be washed thoroughly and left to dry for a minimum of at least 24 hours. Sandpaper must then be used to rough up the tiles to ensure that the silicone has something to stick to.

**If the tiles are damp or you have a damp wall in your bathroom, Grosfillex is perfect to hide it and you will not have a problem with damp in the bathroom again, as Grosfillex is an insulator**

### Damp walls or tiles that are damp and falling off:

This method of putting up Grosfillex will conceal damp or imperfect walls.

- Choose a minimum thickness for wooden runner/laths of 27mm
- Fix a runner in each angle around the doors and windows  
The runner will act as a support for the Grosfillex trims
- Fix the runners in a row on the wall at intervals of 60cm. Ensure air circulation if room is damp
- Place polystyrene insulation between each of the laths, this will give the board support and stop them bowing in the middle under pressure
- After all parts of the runners are secured, position the first trim. Put up all your trims creating a frame around the room
- Screw or staple your panels to the runners, screwing or stapling in the little lip so that the next board will cover it. Again you will need to start in an internal corner or around a door and also with the first panel into the trim on the left hand side you have to cut of the lip so that the board sits squarely into the trim

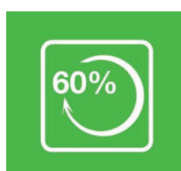




Ecological responsibility is a fundamental principle of GROSFILLEX. This is true not only with regard to the selection of raw materials and production methods but also with regard to the development of our products and our extensive recycling activities. GROSFILLEX's success as a company is, in part, dependant on responsible environmental stewardship, including our approaches to natural resources, waste management and recycling, energy efficiency, air and water emissions.



This icon indicates how far the different types of plastic can be recycled. The type of plastic used is mentioned in the center of the triangle (i.e. PVC), either by their initials or a code.



This symbol indicates the percentage of recycled material used in the product. We recycle 100% of our own waste in our products, we don't generate plastic waste.



Lead has been used in PVC as a stabilizer to prevent yellowing of the material. We no longer use lead in our panels. We now stabilize our material with calcium / zinc.



Concerning Grosfillex panels, the amount of VOCs (volatile organic compounds – COV in French) contained in the inks and varnishes is largely below Eu targets.



This standard symbol concerns the product packaging. It means that we are member of Eco-packaging, the organization responsible for collecting and recycling wasted packaging.



The CE marking indicates the product complies with one or several Eu directives, which include issues of safety, public health and consumer protection.





# Element 3D Range

Wood Effects  
for a Cosy Interior



Rustic White

wood effects



Rustic Blue



Rustic Brown





## Element 3D Range

Mineral Effect for a  
Modern Interior



Rustic White Wall



Rustic Beige Wall



Concrete Tile Effect



# Element 3D Range

## City Graphics for an Urban Style Interior





# Marble, Tile Effect & Ceiling

Panels = 2600 x 375 x 8mm

Roomliner Chrome Panels = 4000/2700 x 200 x 8mm

Roomliner White Panels = 4000/2700 x 250 x 8mm



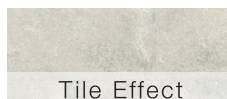
**Marble Grey**  
74357053



**Marble Beige**  
743857064



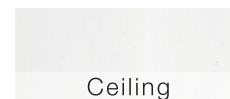
**Marble Beige Tile**  
74380028



**Marble Grey Tile**  
74380A87



**Roomliner Chrome**  
DC281



**Roomliner White**  
FM101C



**Attitude Brilliant White**  
74655096

## Element Range Ceramic Tile

Trim colours to match the Element boards:

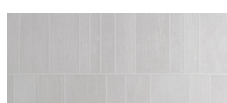
Beige board = Cotton trim

Grey board = Grey trim

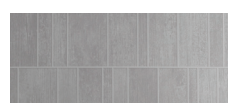
White board = White trim

Anthracite board = Carbon trim

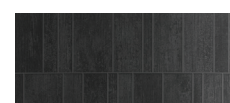
Panels = 2600 x 375 x 8mm



**White S** 74686C15



**Grey S** 74686C12



**Anthracite S** 74686C11



**White M** 74687C15



**Grey M** 74687C12



**Anthracite M** 74687C11



**White XL** 74688C15



**Grey XL** 74688C12



**Anthracite XL** 74688C11



**Beige M** 74687C16

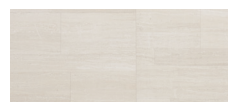


**Beige XL** 74688C16

## Element Range Dune Tile



**Dune Taupe** 74996C47



**Dune White** 74996C46

Trim colours to match the Dune Tile boards:  
Dune Taupe = Intense  
Dune White = Stone White

Panels = 2600 x 375 x 8mm

## Element 3D Mineral Effect

The decorations are composed of 3 or 6 panels.

Mineral-like texture.

3 panels = 2.925 m<sup>2</sup> 112.5 linear cm / 6 panels = 5.850 m<sup>2</sup> 225 linear cm.

Decoration with interchangeable panels, no repetitions.

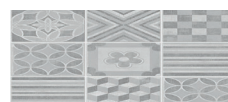
Panels = 2600 x 375 x 8 except where stated.

Due to limitations in the printing process, the colours shown may not match exactly the colour of the actual panels. When choosing a colour please see a sample board at your local suppliers for a true colour representation.

All sizes are in mm.



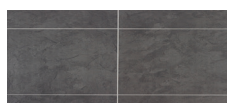
**Grosfillex 3D Cement Tile Effect**  
74967C23  
8mm x 2.6m x 375mm



**Grosfillex 3D Cement Carreaux**  
74741C86  
8mm x 2.6m x 375mm



**Grosfillex 3D Metro Tile**  
N7001G56  
8mm x 2.6m x 375mm



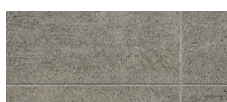
**Grosfillex Dark Slate**  
74967C23  
6mm x 2.6m x 500mm



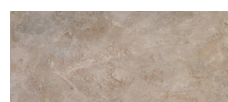
**Rustic White Wall**  
74988C76  
3100038165522



**Rustic Beige Wall**  
74988C79  
3100038165553



**Bombay Stone**  
74008D16  
3100038168950



**Ardoise Beige**  
74001F18  
3100038174746



**3D Marble Effect 40x40**  
74001F48  
3100038174807

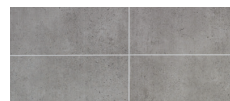


## Element 3D Wood Effect

The decorations are composed of 3 or 6 panels.  
Wood-like texture. 3 panels = 2.925 m<sup>2</sup>  
112.5 linear cm / 6 panels = 5.850 m<sup>2</sup> 225 linear cm.  
Decoration with interchangeable panels, no repetitions.



**3D White Brick**  
74001F21  
3100038174777



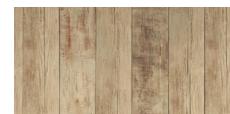
**Concrete Tile Effect**  
74967C24  
3100038156025  
2600 x 500 x 6



**Rustic White**  
74986C71  
3100038165386



**Rustic Blue**  
74986C74  
3100038165409



**Rustic Brown**  
74986C75  
3100038165423

**Panels = 2600 x 375 x 8mm**

## Element 3D City Graphics

The decorations are composed of 3 or 6 panels.  
3 panels = 2.925 m<sup>2</sup> 112.5 linear cm / 6 panels = 5.850 m<sup>2</sup>  
225 linear cm. Decoration with a specific sequence of panels.

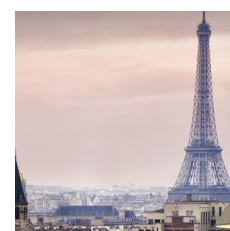
**Panels = 2600 x 375 x 8mm**



**New York B&W**  
74987D96



**New York Colour**  
74987D95



**Eiffel Tower**  
74987D97

## Grosfillex Trims



**External Corner White**  
74431004



**Clippable End Cap White 8mm** 74442004



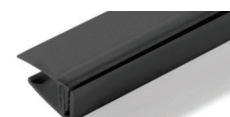
**Division Bar White 8mm**  
74436004



**Multi-Function Internal Corner White** 74443004



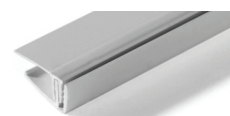
**Bath Seal Sealux Cladseal GR020**



**Clippable End Cap Anthracite** 74455C03



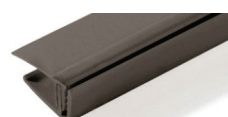
**Internal/External Corner Anthracite** 74582C03



**Clippable End Cap Stone Grey** 74455C18



**Internal/External Corner Stone Grey** 74582C18



**Clippable End Cap Intense** 74455B50



**Internal/External Corner Intense** 74582B50



**Clippable End Cap Stone White** 74648004



**Internal/External Corner Stone White** 74647004



**Clippable End Cap Stone Beige/Cotton** 74455B51



**Internal/External Corner Stone Beige/Cotton**  
74582B51



For your local stockist

**Grosfillex**

**MONAGHAN OFFICE**

Mall Road  
Monaghan  
Ireland  
Tel: (047) 84344  
Fax: (047) 84373  
[grosfillex@jgkellygroup.ie](mailto:grosfillex@jgkellygroup.ie)

**DUBLIN OFFICE**

Block C  
Killeen Court Naas  
Road, Dublin 12  
Tel: (01) 4509900  
Fax: (01) 4509935

**LIMERICK OFFICE**

Eastway Business Park  
Unit E1  
Tipperary Road Limerick  
Tel: (061) 440588/9  
Fax: (061) 440596



Please use this QR  
code to access our  
Facebook page

[jgkellygroup.com](http://jgkellygroup.com)